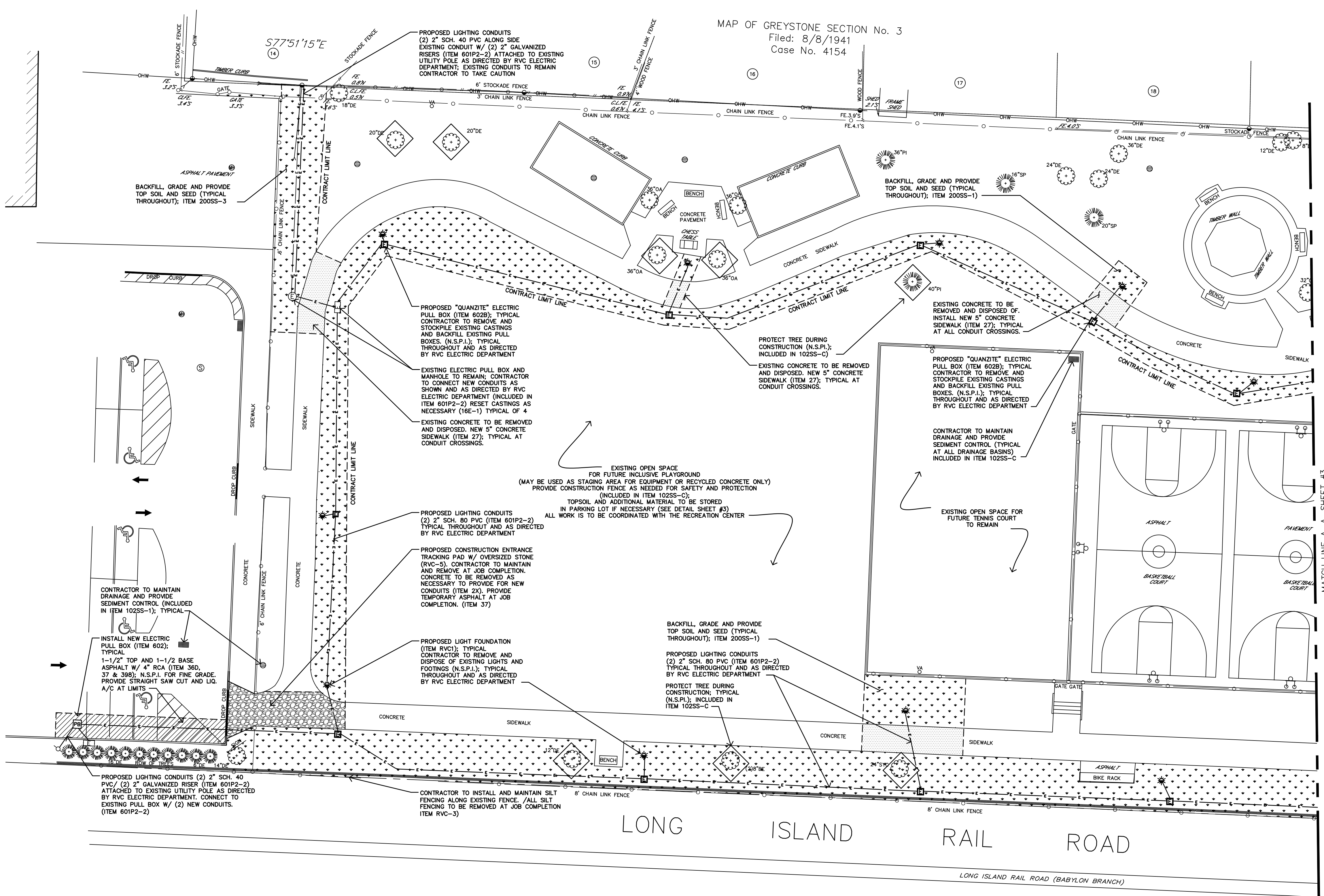


MAP OF GREYSTONE SECTION No. 3
Filed: 8/8/1941
Case No. 4154



LEGEND	
	UTILITY POLE
	GUY WIRE
	LIGHT POLE
	DRAIN INLET
	CATCH BASIN
	BOLLARD
	SIGN
	IRRIGATION CONTROL BOX
	IRRIGATION VALVE
	FLAG POLE
	WOOD POLE
	GAS METER
	GENERIC MANHOLE
	ELECTRIC MANHOLE
	DRAINAGE MANHOLE
	EXISTING TREE
	TREE W/ PROTECTION
	CONTRACT LIMIT LINE (C.L.L.)
	REMOVALS
	SILT FENCING
	PROPOSED (2) 2" SCH. 80 PVC LIGHTING CONDUIT
	PROPOSED (1) 3" SCH. 80 PVC BUILDING SERVICE CONDUIT
	PROPOSED PRECAST ELECTRIC PULL BOX W/ CASTING
	PROPOSED "QUANZITE" LIGHTING PULL BOX #P1118BG18
	CONSTRUCTION ENTRANCE (OVERSIZED STONE) TO BE INCLUDED IN ITEM 1025S-C
	PERMANENT FULL DEPTH ASPHALT RESTORATION (4" RECYCLED CONCRETE, 1-1/2" BASE ASPHALT AND 1-1/2" TOP ASPHALT; ITEMS 398, 36D, AND 37); TEMPORARY ASPHALT 4" RCA AND 2" BASE (398 & 37)
	5" CONCRETE SIDEWALK (ITEM 27)
	1" TOP SOIL AND SEED (ITEM 2005S-1)

LIGHTING PLAN (WEST SIDE)
1"=30'-0"

<p>Incorporated Village of Rockville Centre</p>	DATE	3/14/23	REVISIONS		
	DRAWN BY	MAB	#	DATE	
	SCALE	1"=20'	1	4/28/23	MAB
	SIZE	24X36	2		
			3		
DISTRIBUTION		ENGINEERING DEPARTMENT		PROJECT NUMBER	
PROJECT		PROPOSED VETERAN'S PARK LIGHTING INFRASTRUCTURE		VETS_ELEC_23	
TITLE		LIGHTING SITE PLAN (WEST SIDE)		DRAWING NUMBER	
JOHN A. MIRANDO, P.E. N.Y.S. LICENSE #061765				2_Light_Site.dwg	
				SHEET 2 OF 6	