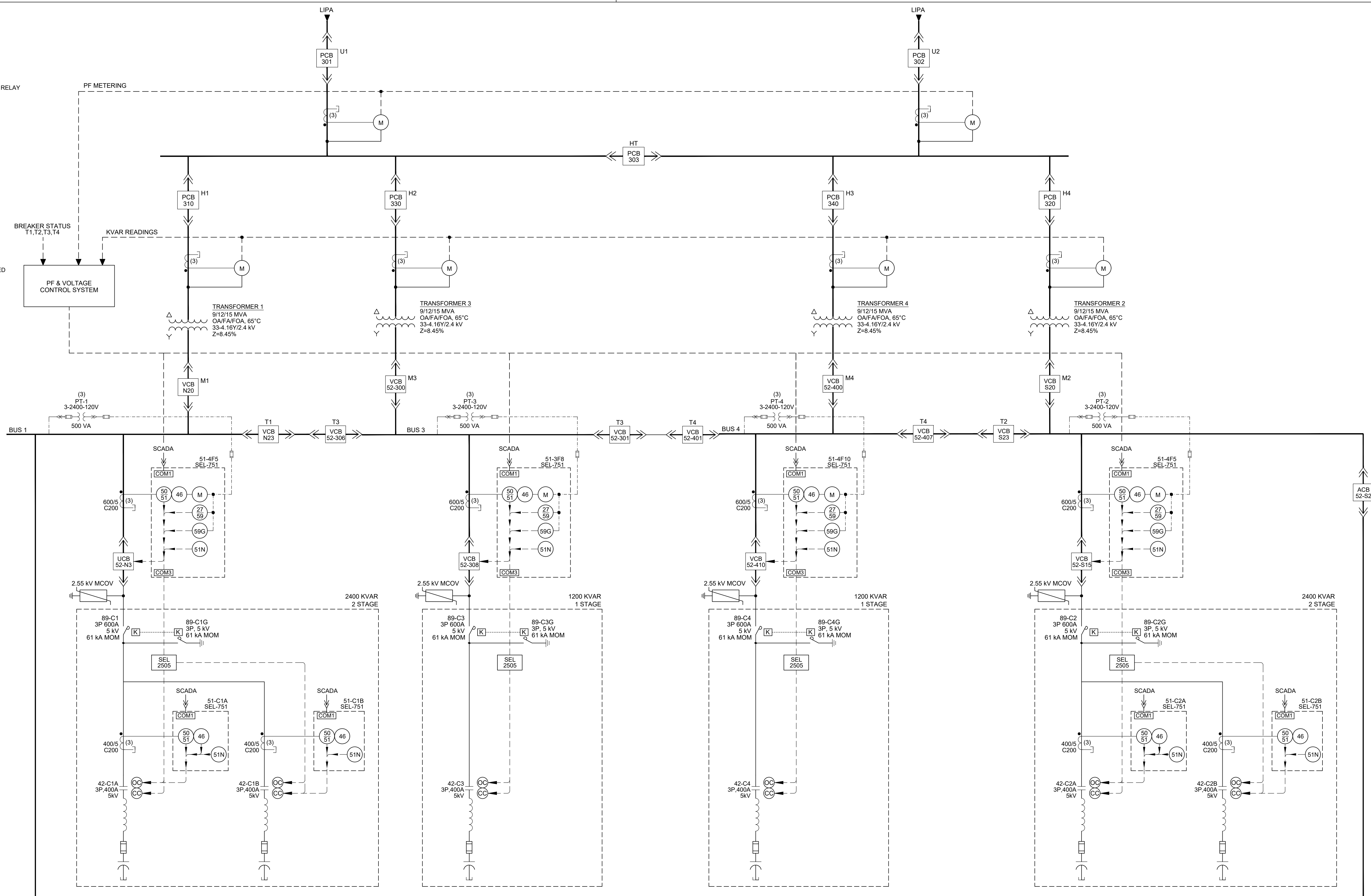


- LEGEND**
- (S) INDICATES SUPERVISORY CONTROL
 - 25 SYNCHRONISM CHECK RELAY
 - 27 UNDERVOLTAGE RELAY
 - 32 DIRECTIONAL POWER RELAY
 - 40 LOSS OF FIELD RELAY
 - 42 CONTACTOR
 - 46 PHASE BALANCE RELAY
 - 50 INSTANTANEOUS OVERCURRENT RELAY
 - 51 TIME OVERCURRENT RELAY
 - 51V VOLTAGE RESTRAINED TIME OVERCURRENT RELAY
 - 59 OVERVOLTAGE RELAY
 - 79 RECLOSING RELAY
 - 81 OVER/UNDER FREQUENCY RELAY
 - 86 LOCKOUT RELAY
 - 87 DIFFERENTIAL RELAY
 - 94 AUXILIARY RELAY
 - A AMMETER
 - ACB AIR CIRCUIT BREAKER
 - BF BREAKER FAILURE
 - M METER
 - MR MULTI-RATIO
 - N NEUTRAL
 - VCB VACUUM CIRCUIT BREAKER
 - CIRCUIT BREAKER
 - CIRCUIT BREAKER (MCCB)
 - FUSE
 - FUSED CUTOUT
 - FUSED DISCONNECT
 - DISCONNECT SWITCH
 - GROUP OPERATED DISCONNECT SWITCH
 - DISCONNECT SWITCH HOOK STICK OPERATED
 - MOTOR OPERATED SWITCH
 - METERING DEVICE
 - LIGHTNING ARRESTER
 - N.O. NORMALLY OPEN
 - N.O. NORMALLY OPEN
 - N.C. NORMALLY CLOSE
 - N.C. NORMALLY CLOSE
 - CURRENT TRANSFORMER (SINGLE RATIO)
 - POTENTIAL TRANSFORMER
 - REACTOR



NOTES:
 1. AFTER A LINE OUTAGE, PROTECTION WILL OPEN CAPACITOR BANK UNITS. NOMINAL VOLTAGE AND FREQUENCY SHALL BE RESTORED FOR A MINIMUM OF 5 MINUTES BEFORE CAPACITORS CAN BE CONNECTED TO THE SYSTEM.

Rev No.	Date	Description	By
1	10/15/19	ISSUE FOR REVIEW AND COMMENTS	

PE STAMP/REAL	

ONE-LINE DIAGRAM
 SUBSTATION 1-4 CAPACITOR BANKS
 VILLAGE OF ROCKVILLE CENTRE
 MAPLE AVENUE SUBSTATION
 ROCKVILLE CENTRE, NY

ENGINEERING SERVICES, LLC
 13 TROWBRIDGE DRIVE BETHEL, CT 06801
 PHONE: (203) 798-9415 FAX: (203) 742-2335

Drawn By: Scale: E-1.0PFC
 AT NONE