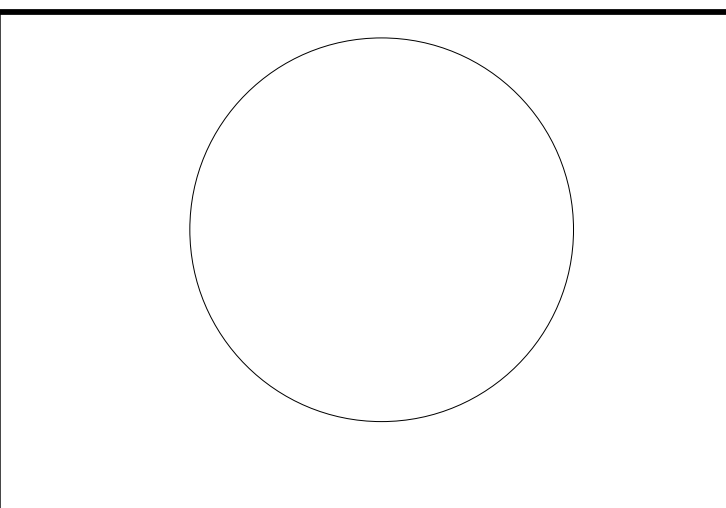


CONSULTANTS:

MARK	DATE	DESCRIPTION
1	9/29/2023	ADDENDUM 2



DESIGNED BY:	DRAWN BY:	CHECKED BY:	REVIEWED BY:
RCM	RCM		

PROJECT No.: ROCK2301    DATE: AUGUST 2023    SCALE: AS SHOWN

CLIENT  
**Inc. Village of Rockville Centre**

CBS Modifications at Plant No. 1



127 Shepherd Street  
Rockville Centre, NY 11570

CONTRACT

STATUS  
**FINAL BID DOCUMENT**

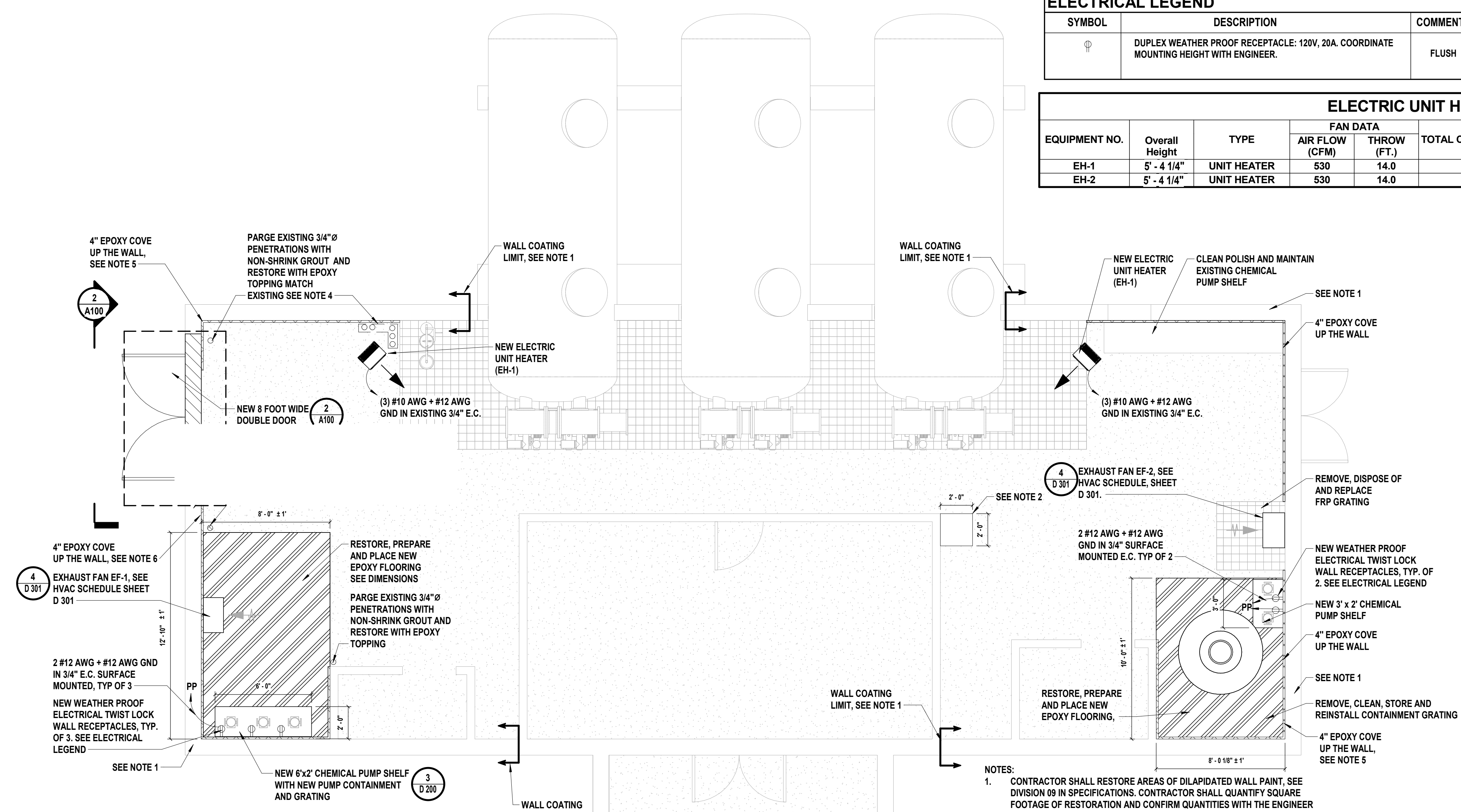
SHEET TITLE  
**FIRST FLOOR RESTORATION**

DRAWING No. **A100.00**    SHEET No. **6** OF **11**

ELECTRICAL LEGEND		
SYMBOL	DESCRIPTION	COMMENTS
	DUPLEX WEATHER PROOF RECEPTACLE: 120V, 20A. COORDINATE MOUNTING HEIGHT WITH ENGINEER.	FLUSH

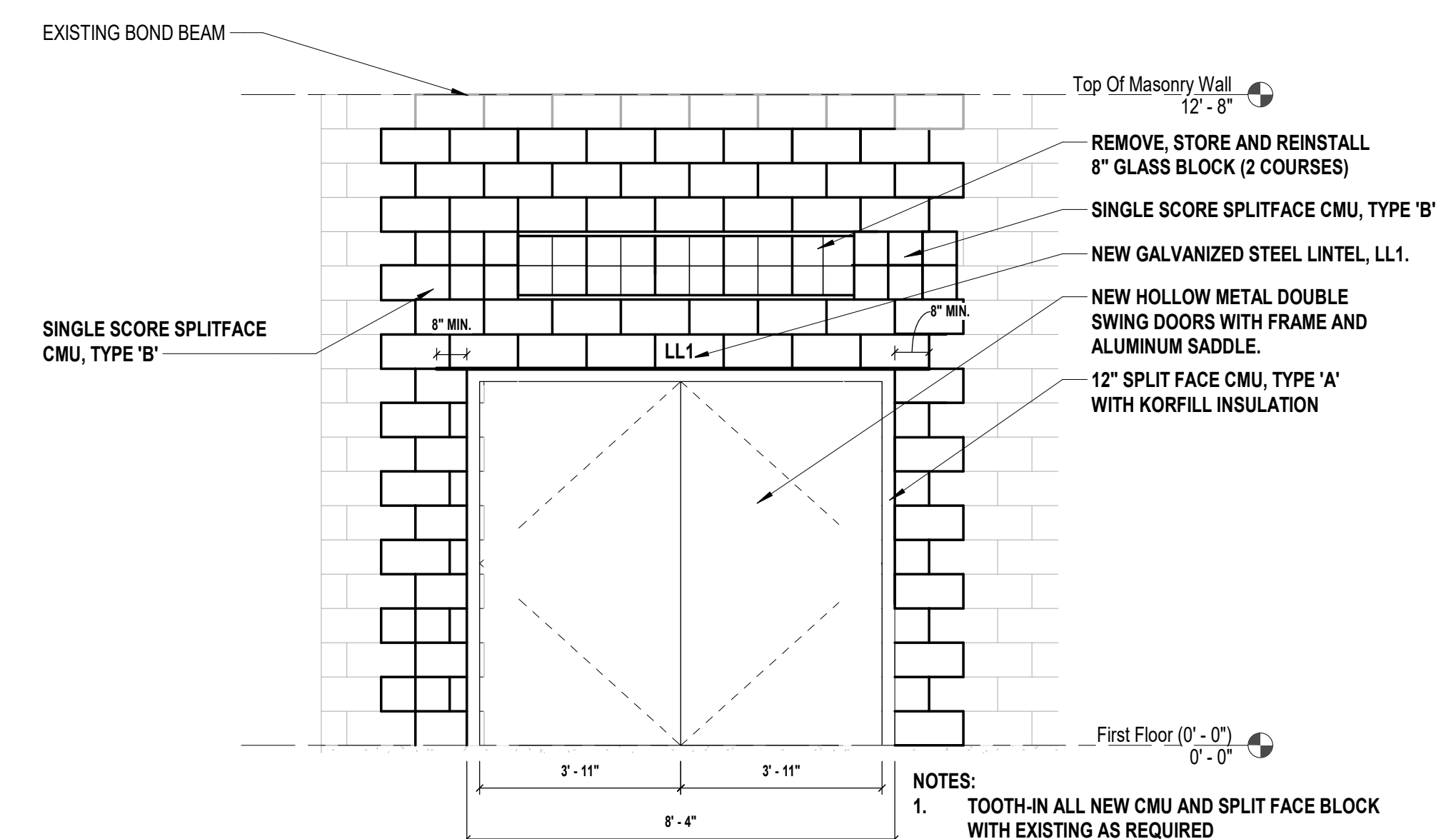
LINTEL SCHEDULE		
MARK	SIZE	DETAIL
LL1	W6x12 w/ PL 1/4" X 11" X 9-8"	

ELECTRIC UNIT HEATERS								
EQUIPMENT NO.	Overall Height	TYPE	FAN DATA		TOTAL CAPACITY (MBH)	VOLTAGE/PHASE	KW	NOMINAL OPERATING WEIGHT (LBS.)
			AIR FLOW (CFM)	THROW (FT.)				
EH-1	5' - 4 1/4"	UNIT HEATER	530	14.0	25.6	208/3	7.5	52.0
EH-2	5' - 4 1/4"	UNIT HEATER	530	14.0	25.6	208/3	7.5	52.0

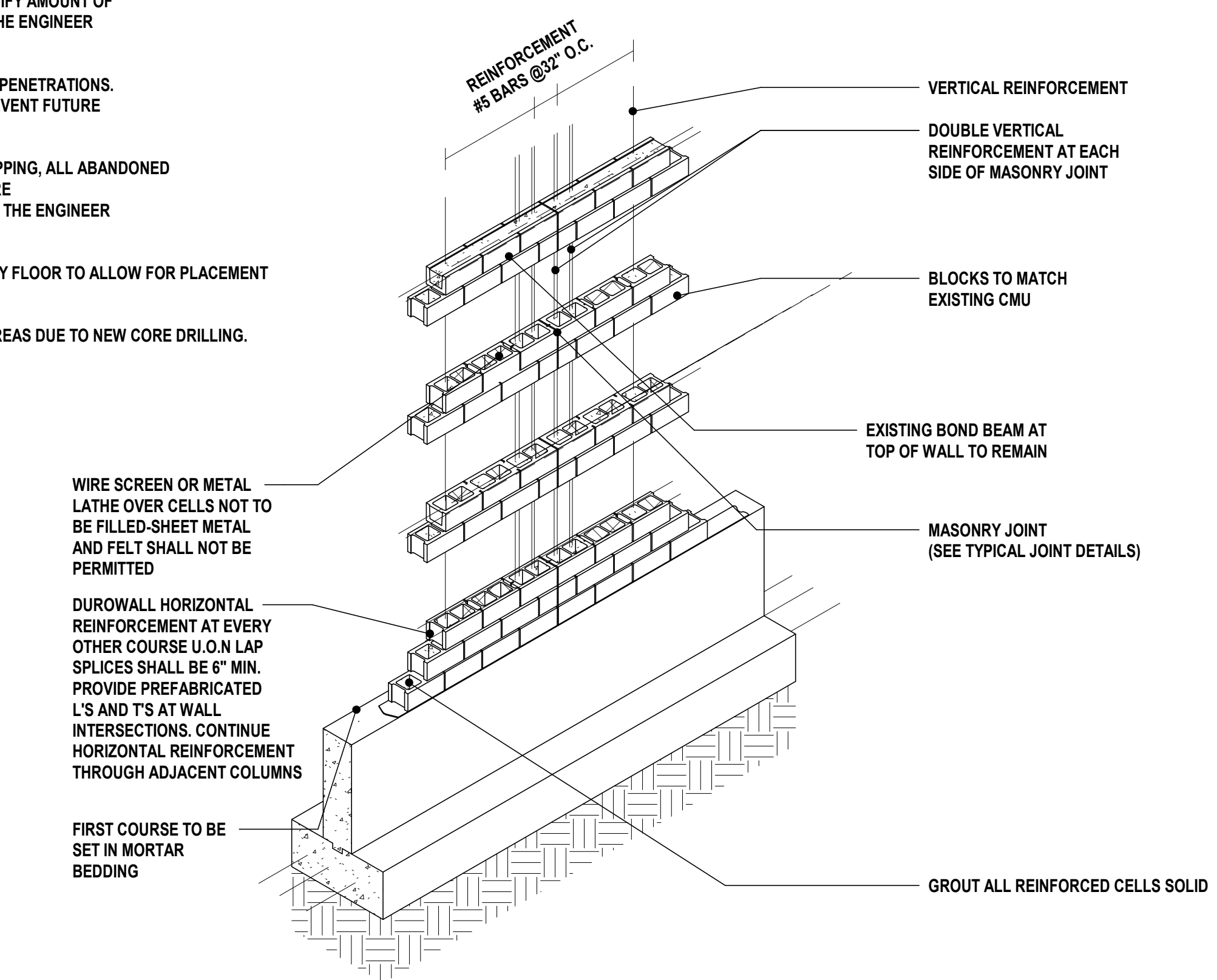


**1 First Floor Restoration Plan**  
SCALE: 1/4" = 1'-0"

- NOTES:
- CONTRACTOR SHALL RESTORE AREAS OF DILAPIDATED WALL PAINT, SEE DIVISION 09 IN SPECIFICATIONS. CONTRACTOR SHALL QUANTIFY SQUARE FOOTAGE OF RESTORATION AND CONFIRM QUANTITIES WITH THE ENGINEER AND PROPOSAL ITEM.
  - CONTRACTOR SHALL REPLACE AREAS OF DILAPIDATED 2'x2' CEILING TILE. SEE DIVISION 09 IN SPECIFICATIONS. CONTRACTOR SHALL QUANTIFY AMOUNT OF REPLACED CEILING TILES AND CONFIRM QUANTITIES WITH THE ENGINEER AND PROPOSAL ITEM.
  - CONTRACTOR SHALL CLEAN OUT ALL REMAINING AND NEW PENETRATIONS. ANCHOR PIPE FLASHING TO COVER ANNULAR AREAS TO PREVENT FUTURE CHEMICAL INGRESS INTO THE BASEMENT.
  - CONTRACTOR SHALL PARGE AND RESTORE WITH EPOXY TOPPING, ALL ABANDONED PIPE PENETRATIONS. CONTRACTOR SHALL QUANTIFY SQUARE FOOTAGE OF RESTORATION AND CONFIRM QUANTITIES WITH THE ENGINEER AND PROPOSAL ITEM.
  - CONTRACTOR SHALL MAKE NECESSARY CUT BACK OF EPOXY FLOOR TO ALLOW FOR PLACEMENT OF WALL COVE.
  - CONTRACTOR SHALL REMEDIATE ALL DAMAGED EPOXIED AREAS DUE TO NEW CORE DRILLING.



**2 Block and Door Detail**  
SCALE: 3/8" = 1'-0"



**3 Typical CMU Wall Bond Beam Elevation Detail**  
SCALE: 3/16" = 1'-0"

C:\Users\michele\Documents\ROCK2301\_Contract21\_M\_michele.dwg 9/29/2023 11:52:43 AM

CONSULTANTS:

MARK	DATE	DESCRIPTION
1	9/29/2023	ADDENDUM 2



**JOHN R. COLLINS, P.E.**  
 NY PROFESSIONAL ENGINEER LIC. NO. 082926  
 Exp. Date  
 DESIGNED BY: RCM DRAWN BY: RCM CHECKED BY: REVIEWED BY:  
 PROJECT No: ROCK2301 DATE: AUGUST 2023 SCALE: AS SHOWN

CLIENT  
**Inc. Village of Rockville Centre**

CBS Modifications at Plant No. 1



127 Shepherd Street  
 Rockville Centre, NY 11570

CONTRACT

STATUS **FINAL BID DOCUMENT**

SHEET TITLE **FIRST FLOOR RESTORATION**

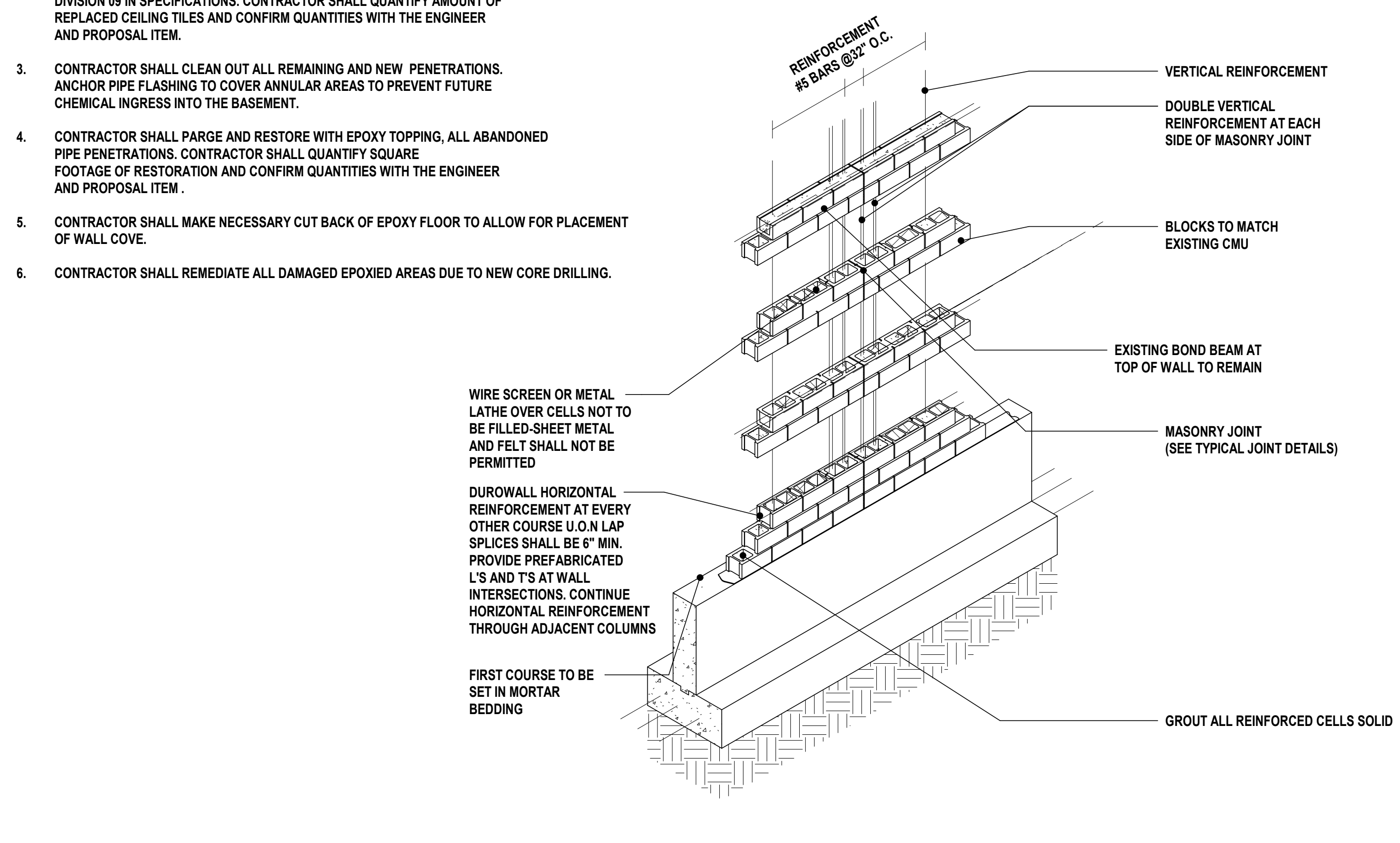
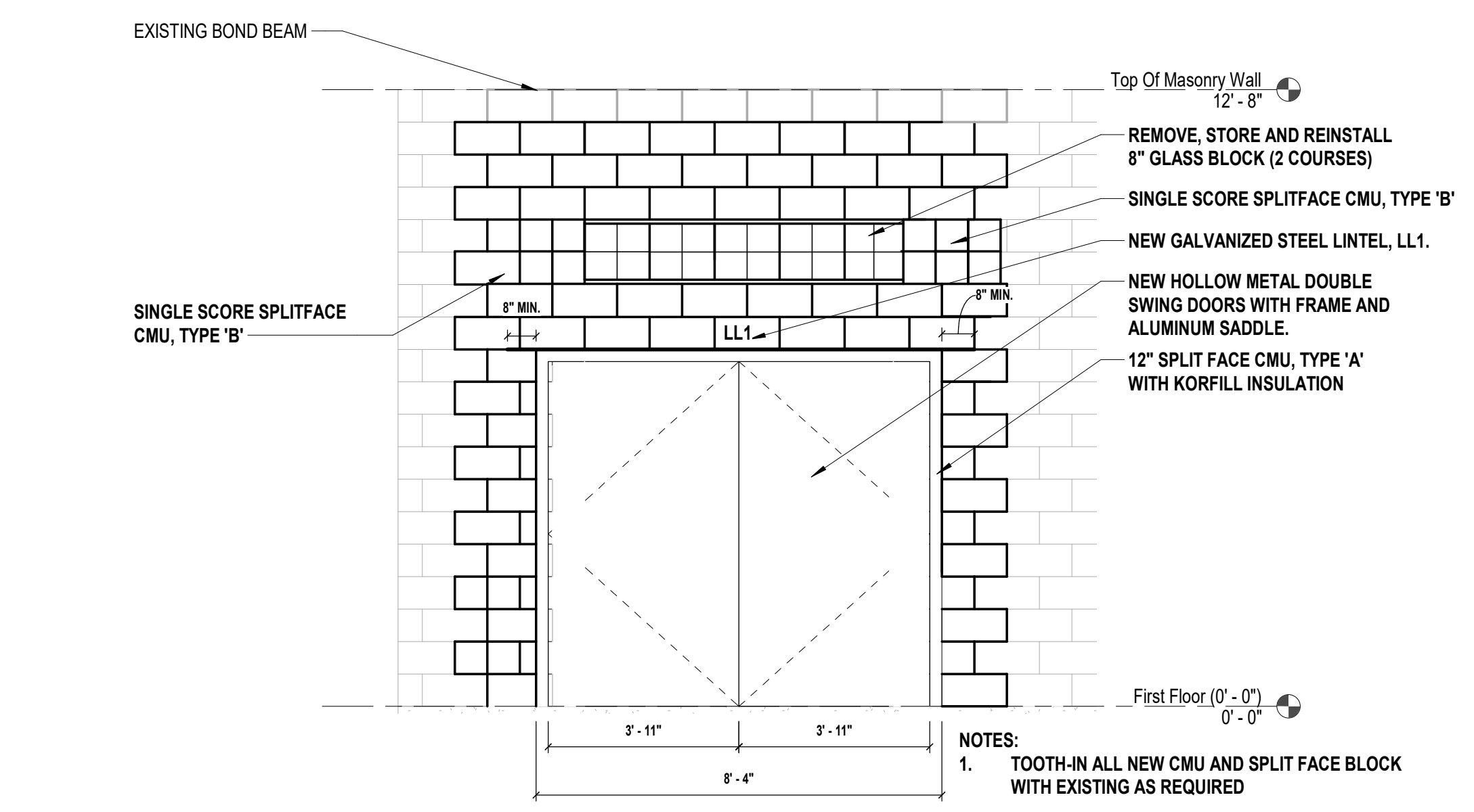
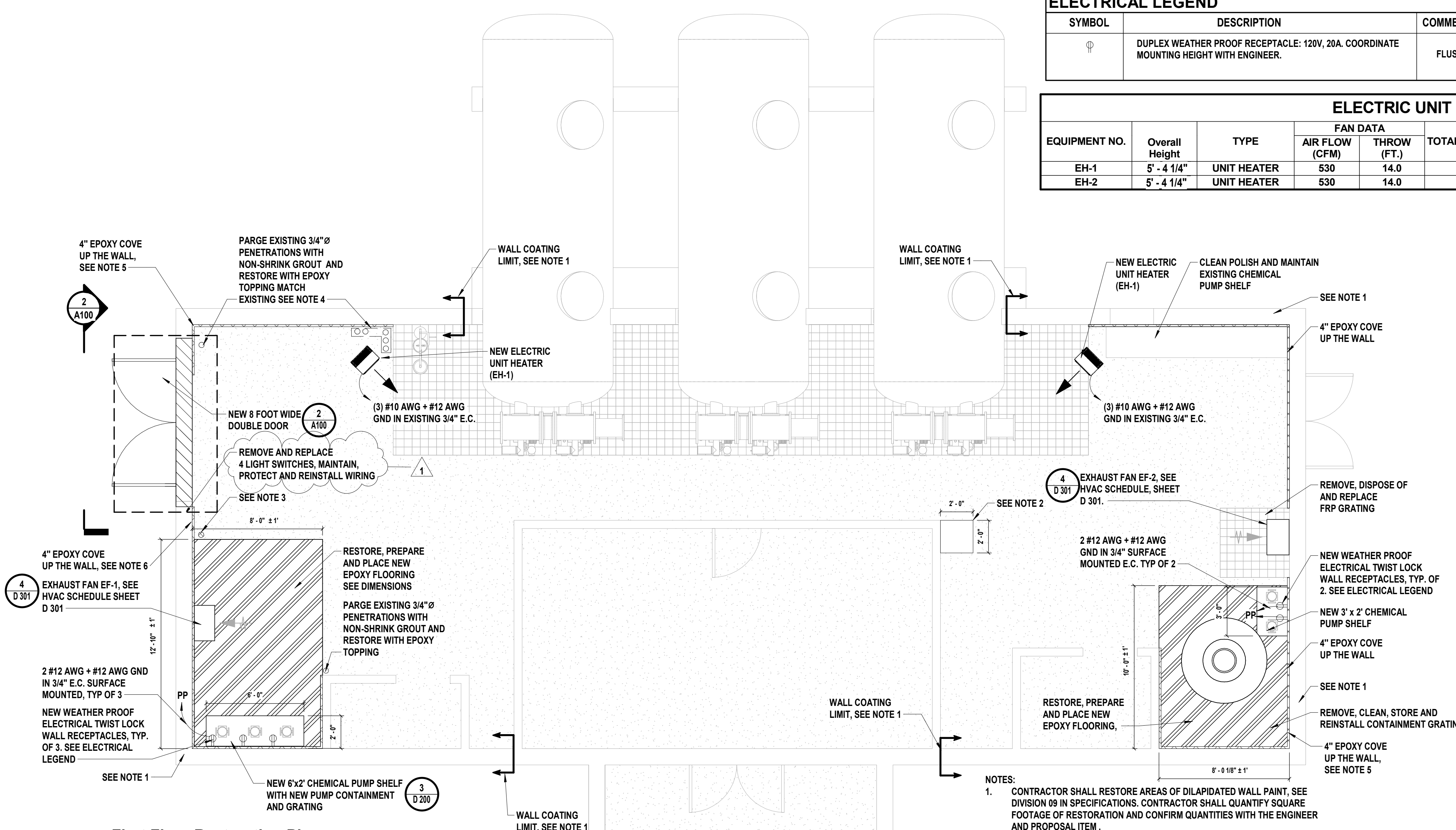
DRAWING No. **A100.00** SHEET No. **6** OF **11**

ELECTRICAL LEGEND		
SYMBOL	DESCRIPTION	COMMENTS
	DUPLEX WEATHER PROOF RECEPTACLE: 120V, 20A. COORDINATE MOUNTING HEIGHT WITH ENGINEER.	FLUSH

LINTEL SCHEDULE		
MARK	SIZE	DETAIL
LL1	W6x12 w/ PL 1/4" X 11" X 9-8"	

ELECTRIC UNIT HEATERS								
EQUIPMENT NO.	Overall Height	TYPE	FAN DATA		TOTAL CAPACITY (MBH)	VOLTAGE/PHASE	KW	NOMINAL OPERATING WEIGHT (LBS.)
			AIR FLOW (CFM)	THROW (FT.)				
EH-1	5' - 4 1/4"	UNIT HEATER	530	14.0	25.6	208/3	7.5	52.0
EH-2	5' - 4 1/4"	UNIT HEATER	530	14.0	25.6	208/3	7.5	52.0

FINISH SCHEDULE		
ROOM	MATERIAL	COATING SYSTEM
BASEMENT	STRUCTURAL STEEL	PAINT SYSTEM SEE SPECIFICATION 099713
BASEMENT	MECHANICAL PIPING	PAINT SYSTEM SEE SPECIFICATION 099744
FIRST FLOOR	CMU WALLS	SEE SPECIFICATION
FIRST FLOOR	CONCRETE	EPOXY: SEE SPECIFICATION 096719



C:\Users\michele\Documents\ROCK2301\_Contract21\_M\_michele.dwg 9/7/2023 5:17:06 PM