



VILLAGE OF ROCKVILLE CENTRE STORM WATER GUIDE



The Department of Public Works
10 Sunrise Highway, Rockville Centre
516-678-9288

What is Storm Water?

Storm Water comes from precipitation that flows across the ground or pavement when it rains or when snow and ice melt.

The water seeps into the ground and flows into our storm drains. These are the drains that you see at street corners or low points on the sides of your streets.

Storm water runoff is a concern because of the pollutants it may carry as it is conveyed to the nearest body of water, such as a local stream, pond, harbor or the ocean.

Why is Storm Water Pollution a Problem?

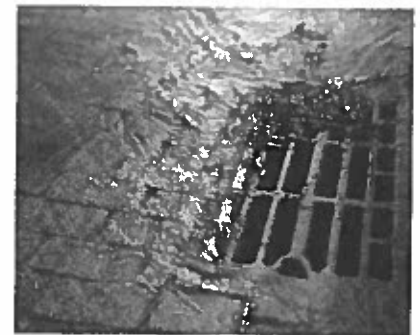
Unlike waste water that goes into our sanitary sewers, from our showers and our toilets, storm water, and all that it is carrying, is not treated before being discharged to our surrounding water bodies.

Storm water pollution can harm fish & other aquatic wildlife, kill native vegetation, destroy aquatic habitats, and make recreational areas unsafe and unpleasant. Nutrients carried by storm water may also cause undesirable algae and vegetative growth.

Basins and sumps must be recharged. Some basins don't go anywhere.

Substances carried by storm water that are considered to be pollutants are:

- Sediment, trash, & debris
- Oil grease, and toxic chemicals
- Soap and paint products from outdoor maintenance activities
- Pesticides and fertilizers from lawns and gardens
- Viruses, bacteria, & nutrients from pet waste and failing septic systems



For more detailed information particular to Nassau County, visit
<https://www.nassaucountyny.gov/1876/Stormwater-Management-Program>

BEST MANAGEMENT PRACTICES

Landscaping and Gardening

- Do not over-water. If water flows off your yard onto your driveway or sidewalk, your system is over watering. Periodically inspect and fix leaks and misdirected sprinklers.
- Do not rake or blow leaves or clippings into the street, gutter or storm drain. Instead, dispose of waste by composting or bagging it and placing it with your household waste for pickup
- Follow directions on pesticides and fertilizers, (measure, do not estimate amounts). Do not use if rain is predicted within 48 hours

Pet Care

- Always pick up after your pet. Flush waste down the toilet or dispose of it in the trash. Leaving pet waste on the ground increases public health risks by allowing harmful bacteria to wash into the storm drain and eventually into our waterways
- **NEVER DEPOSIT PET WASTE DIRECTLY IN STORM DRAIN!**

S.T.O.P Collections

The Town of Hempstead's Stop Throwing Out Pollutants program holds waste collections from 8 A.M. to 3 P.M. once a month in various locations in the Town. The Village of Rockville Centre residents may utilize this service by bringing hazardous household products to the collection point for proper disposal at no charge.

- Items **ACCEPTED** by the program: paints, solvents, varnish, waste oil, antifreeze, batteries, fluorescent light bulbs, car tires (off the rim), and photography and pool chemicals.
- Items **NOT ACCEPTED** by the program: commercial or medical waste, ammunition, explosives, propane, tanks over 20 pounds, or unlabeled materials

For more information call the Town of Hempstead Department of Sanitation at 378-2200 or visit the S.T.O.P. web page <http://toh.li/sanitation-department/stop-throwing-out-pollutants>.

Automotive

- Take your vehicle to a commercial car wash whenever possible. If you wash your vehicle at home, choose soaps or detergents labeled non-toxic, phosphate free or biodegradable. Vegetable and citrus-based products are typically safest for the environment. Do not allow wash water from vehicle washing into the street, gutter, or storm drain.

Pool Maintenance

- Pool and spa water must be de-chlorinated and be free of excess acid, alkali or color.
- When draining your pool all water should be directed to a drywell on your property.

Household Activities

- Take items such as used batteries, oven cleaners, automotive fluids, painting products, TVs and computer monitors to a household Hazardous Waste Collection center

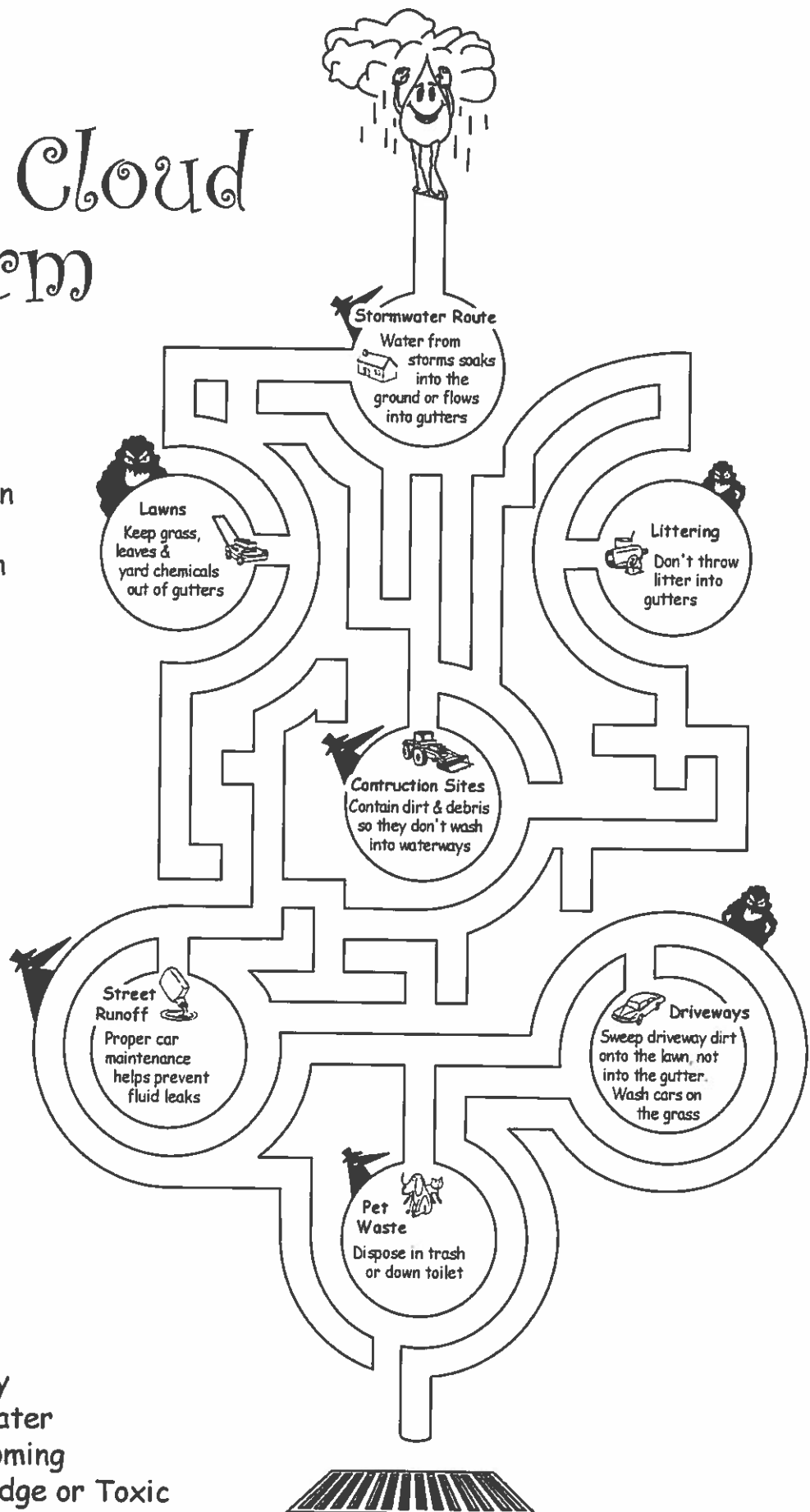
E-Cycling

Every first Saturday of the month at DPW between 10 A.M. and 2 P.M. residents may bring their electronics to 10 Sunrise Highway. E-Cycling will remain open all year. Assistance will be given for extra large items. Please call (516) 678-9216 to schedule a pickup.

- Acceptable E-Cycling items: Computers/Computer monitors, anything that plugs into a computer
- VCR*DVD*DVR*IPAD*Electronic Readers
- Video Game Systems, Televisions, Cable Boxes, Small Servers
Email ewaste@dec.ny.gov to answer any questions.

From Storm Cloud to Storm Drain

The Stormwater system channels rain and snowmelt into gutters, which drain into streams and rivers. When people pollute stormwater, they also pollute our natural waterways.



Help Droplet journey through the stormwater system without becoming contaminated by Sludge or Toxic

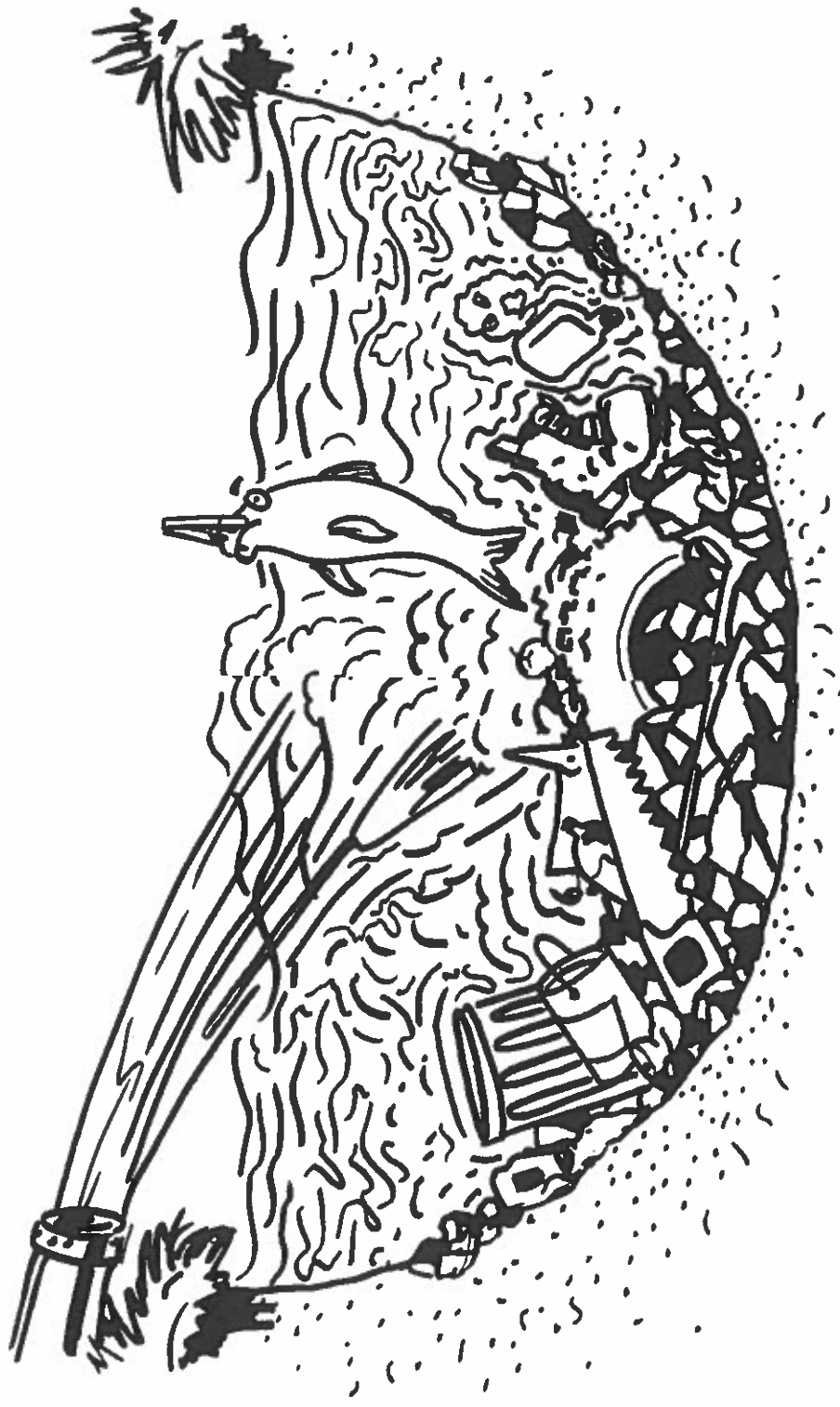
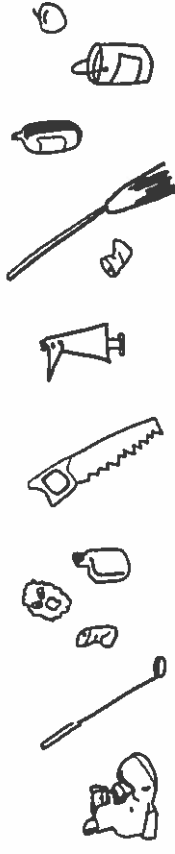
Streams and From Used Guinevere

Help Droplet clean this stream.

What doesn't belong? Can you find

all of the hidden trash pictured here? →

Circle or color the trash.



Village of Rockville Centre "Storm Water Pollutes"

The Department of Public Works, 10 Sunrise Highway, Rockville Centre 516-678-9288

Here are ways YOU can Help Prevent Polluted Stormwater Runoff



Check car for leaks and
recycle used motor oil.
Never pour it on the ground
or into a storm drain.

Direct downspouts
away from paved
surfaces onto
the lawn or into
a rain garden.

Plant grass or plants
on the bare spots in
your yard.

Follow directions on fertilizer
labels and sweep off driveways,
sidewalks, and roads so that the
chemicals won't get washed into
storm drains.

Pick up after your pet.
Don't let pet waste wash
into storm drains.

Use a rain barrel to conserve
water from your roof to water
plants and wash your car.

NEVER pour any
kind of waste into
storm drains.

Take your car to a car
wash or wash it on the lawn
so cleaners don't run off into
storm drains.

Minimize the use of
pesticides and herbicides.

Compost yard waste like
leaves, weeds, and grass
clippings. Don't rake them
to the curb or dump them
in ditches or waterways.

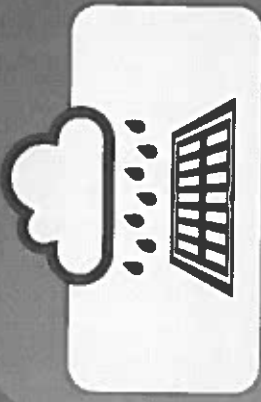


Visit www.watershedcouncil.org

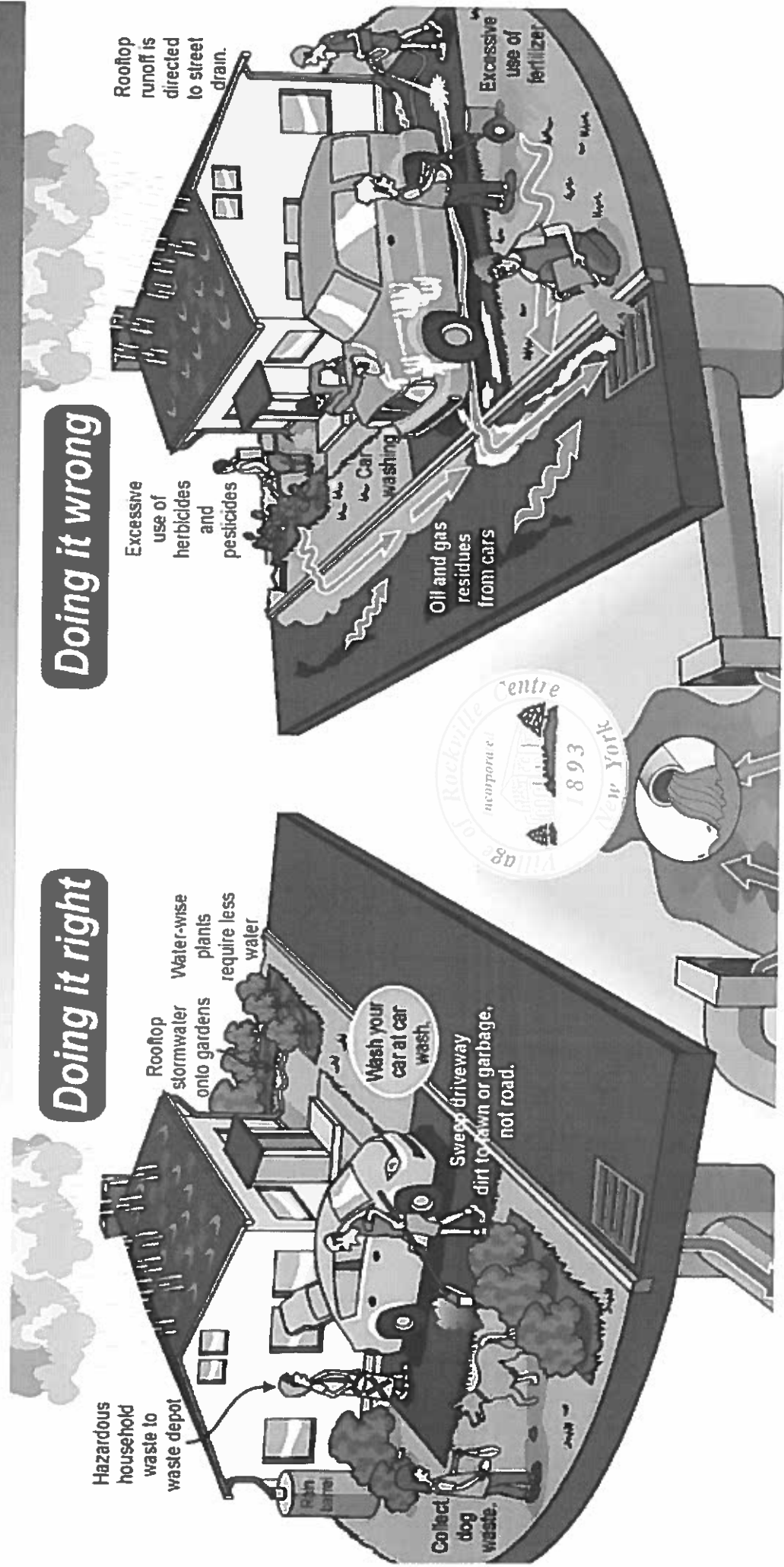
Look on the "Stormwater Matters for Kids" icon for additional activity pages and information.

Village of Rockville Centre "Storm Water Pollutes"
The Department of Public Works, 10 Sunrise Highway, Rockville Centre, 516-678-9288

VILLAGE OF ROCKVILLE CENTRE STORM WATER POLLUTES



The Department of Public Works
10 Sunrise Highway, Rockville Centre
516-678-9288



For more detailed information particular to Nassau County, visit <https://www.nassaucountyny.gov/1876/Stormwater-Management-Program>